

# PUMPS

## KUDOS USA HYDRAULIC ELECTRIC PUMP GHP-5SDRM

### ■ Model No. **GHP-5SDRM**



Height : 667 mm  
Weight : 63 kgs (with oil)

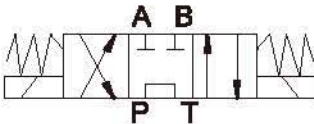
### ■ Specifications:

Max. Pressure : 700 bar  
Oil Required : 9.5 L  
Motor Size : 6.5 HP  
Valve type : 4-way, 3-position Solenoid Valve  
Motor Manufacturer : Honda  
Manually controlled engine

### ■ Oil Delivery:

13.4 L / min at low pressure  
2.4 L / min at high pressure

### ■ Hydraulic Symbol Table

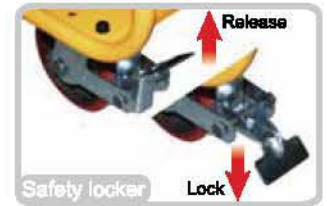


### ■ Features:

- Pressure gauge located in upright position for better reading.
- Supplied with inflatable tires and rotated 360° front wheels for changing direction easily.
- High efficiency and fast working gasoline pump
- GHP-5SD permits the user to advance, hold and retract the ram at both single and double acting presses.
- Suitable for double acting compression heads used in transmission line stringing and maintenance or single acting compression heads for overhead work fields.
- Radio Frequency remote controller is able to be used wireless at less 30 meters distance by its remote operation.



• Optional remote function (RF wireless remote / wire remote)



• Rotatable 360° front wheel, easy to change direction.



• Improved design of enlarged tires to eliminate bumpy road



• Optional remote controller, shall order separately.

